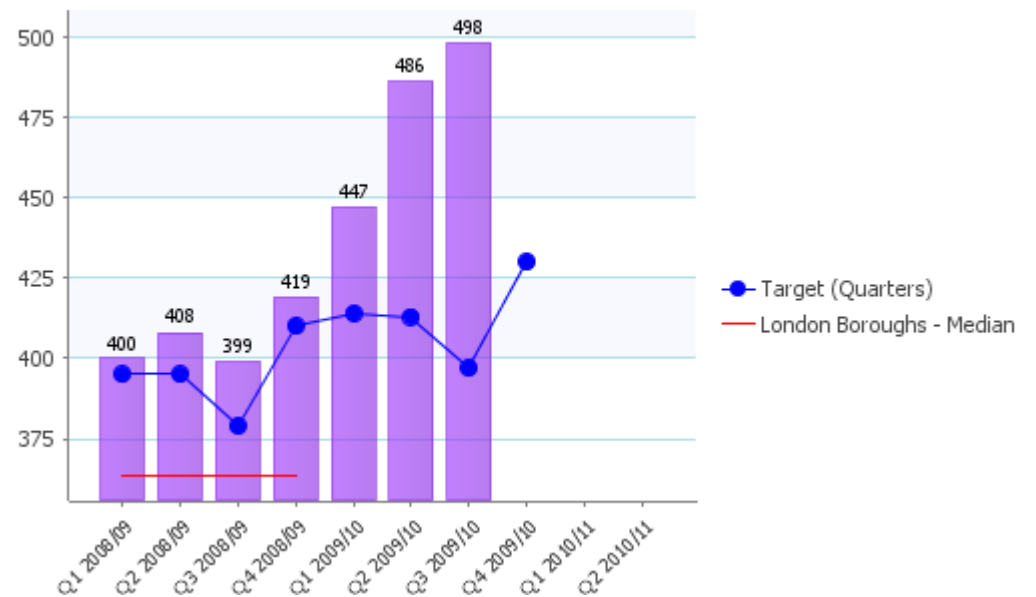


Appendix 2 Well-Being Theme board Exception Report

NI 39 Rate of Hospital Admissions per 100,000 for Alcohol Related Harm (LAA)				
Outcome Lead		Portfolio		Sustainable Community Strategy Outcome
This indicator measures the rate of alcohol related admissions per 100,000 population using Hospital Episode Statistics.				
2009 - 2010				
	Value	Target	Status	
Q1 2009/10	447	414	●	
Q2 2009/10	486	413	●	
Q3 2009/10	498	397	●	
Q4 2009/10		430		
2009/10	1431	1224	●	
2010 - 2011				
	Value	Target	Status	
Q1 2010/11				
2010/11		1750		
●		↑		
Red				
<p>The latest provisional figures from North West Public Health Observatory are available for quarters 1-3 in 2009/10 financial year (Published in June 2010 and available from: http://www.nwph.net/alcohol/lape/download.htm). The total for the quarters (1431) represents a 18% increase from last year.</p>				

PP02_H_N0039 Rate of Hospital Admissions per 100,000 for Alcohol Related Harm (LAA)

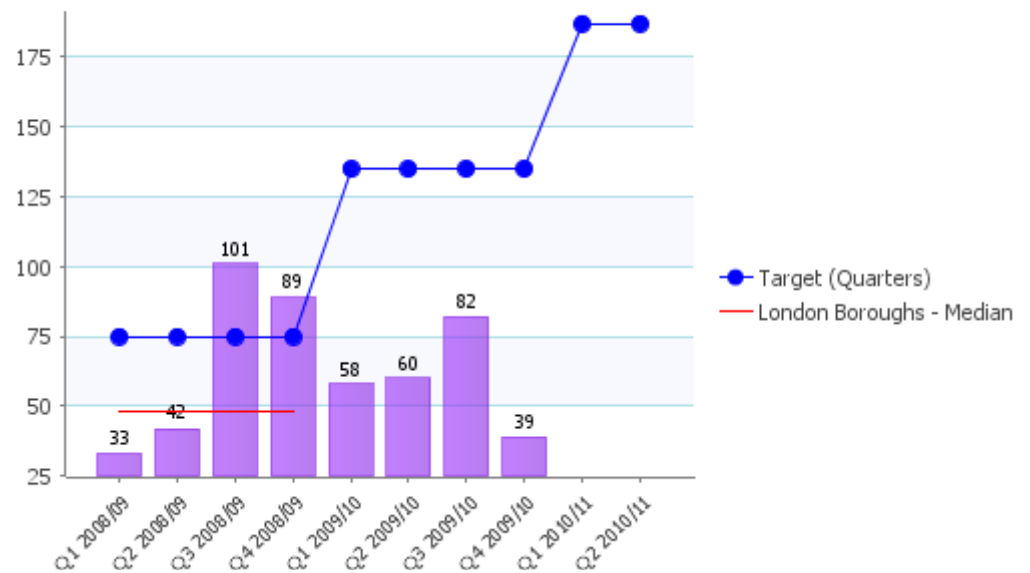


NI 40 Number of drug users recorded as being in effective treatment against 2007/08 baseline. (LAA)

Outcome Lead **Portfolio** **Sustainable Community Strategy Outcome**

This indicator shows the change in the total number of drug users, using crack and/or opiates recorded as being in effective treatment, when compared with the number of drug users using crack and/or opiates recorded as being in effective treatment in the baseline year of 2007/8.

PP02_P_N0040 Number of drug users recorded as being in effective treatment against 2007/08 baseline. (LAA)



2009 - 2010			
	Value	Target	Status
Q1 2009/10	58	135	Red
Q2 2009/10	60	135	Red
Q3 2009/10	82	135	Red
Q4 2009/10	39	135	Red
2009/10	39	135	Red
2010 - 2011			
	Value	Target	Status
Q1 2010/11		187	
2010/11		139	

●
Red

↓

Following the national NDTMS (National Drug Treatment Monitoring System) audit a revised baseline for numbers of clients in effective treatment has been agreed by CQC. For Haringey this has resulted in the original baseline of 933 being reduced to 909 with a new target of 1041 PDUs in effective treatment for 2009-10. Despite these changes the target has not been met. This is because of a significant drop in the new clients coming into drug treatment last year. The DAAT partnership has developed a specific action plan to increase the numbers. The first quarter of 2010-11 has indeed seen an increase in the trend with 38 more new clients in comparison to last year. Also Haringey has consistently been above London average for the proportion of clients completing treatment successfully (44% against 33% in 2009-10).

NI 112 Percentage change in under-18 conceptions (per 1000 girls aged 15-17 as compared with the 1998 baseline) (LAA)

Outcome Lead

The change in the rate of under-18 conceptions per 1,000 girls aged 15-17 years resident in the area for the current calendar year, as compared with the 1998 baseline rate, shown as a percentage of the 1998 rate.

2009 - 2010			Status
	Value	Target	
Q1 2009/10	7.2%	-18.1%	●
Q2 2009/10	-2.9%	-18.1%	●
Q3 2009/10	-8.8%	-18.1%	●
Q4 2009/10		-18.1%	●
	Value	Target	
2010/11		55.0%	

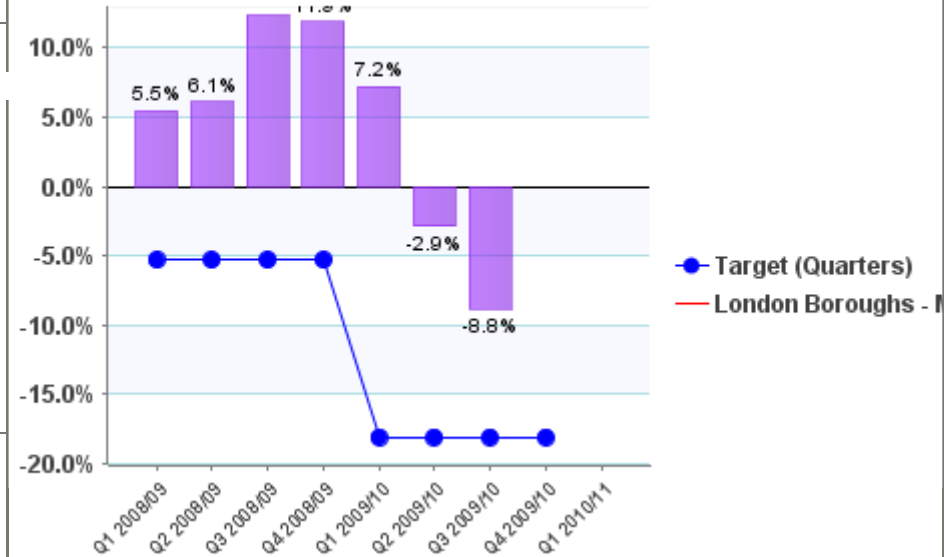
●

Red

↑

Portfolio Sustainable Community Strategy Outcome

CY02_P_N0112 Percentage change in under-18 conceptions (per 1000 girls aged as compared with the 1998 baseline) (LAA)



-15.9% is based on 2008 actual data. There were 52.4 conceptions per 1,000 in 2008 compared to 62.3 in 1998, the baseline year. This decrease was greater than the England average of -13%. The target for 2010 (2011-12) is to reduce the number of conceptions from the 1998 baseline rate by -55% (28 per 1,000 conceptions). An extremely challenging task.